

AIMCooustic Floor Slab

Thermal and acoustic insulation for floor constructions.



Technical Guide

PRODUCT

High Density Tissue Faced Rockwool Floor Slab (with optional rebated edges).

APPLICATIONS

AIMCooustic Floor Slab may be used with ground bearing slabs, timber joist, beam and block or concrete suspended floors.

AIMCooustic Floor Slab may be used under a fine concrete screed in 'wet' construction, or under flooring grade chipboard in 'dry' construction.

The tissue facing allows the laying of wet screed directly to AIMCooustic Floor Slab without building paper. Rebated edges, if chosen, help prevent grout leakage and thermal/ acoustic bridging.



Example product installation schematic using materials by others

FEATURES

- High Compressive strength.
- Good thermal insulation properties.
- Excellent acoustic insulation properties.
- Euroclass A1 Non combustible solution.

BENEFITS

- Helps meet the thermal requirements of ground and upper floors.
- Helps deliver good acoustic insulation performance upper floors.
- Will not contribute to a fire within the building.
- Easy to install



PHYSICAL INFORMATION

High Density Tissue Faced Rockwool Floor Slab

- Slab size 1200x1000mm
- Thickness: 25, 30, 40, 50, 60, 70, 75, 80, 90, 100mm*
(* Material may be double layered with staggered joints for greater thickness)
- High compressive strength
- Thermal conductivity of 0.040W/mK (boards up to 40mm) or 0.038W/mK (boards of 50mm or thicker).
- Optional four edge rebated
- Complies with Part E of Building Regulations

PACKAGING

AIMCooustic orders will be supplied stretch wrapped onto pallets with a showerproof polythene pallet cover and edge protection (ie, no cartons).

AS STANDARD

1200 x 1000 boards in thicknesses of 25, 30, 40, 50, 60, 70, 75, 80, 90, 100mm*

(* Material may be double layered with staggered joints for greater thickness)

TECHNICAL INFORMATION

Thermal Performance

U value calculations in accordance with BS EN ISO 6946 are available upon request.

Fire Performance

AIM AIMCoustic Floor Slabs are manufactured from Rockwool stone wool which is inherently non-combustible and is rated A1 when tested to EN 13501-1 classification using test data from reaction to fire test.

Acoustic Performance

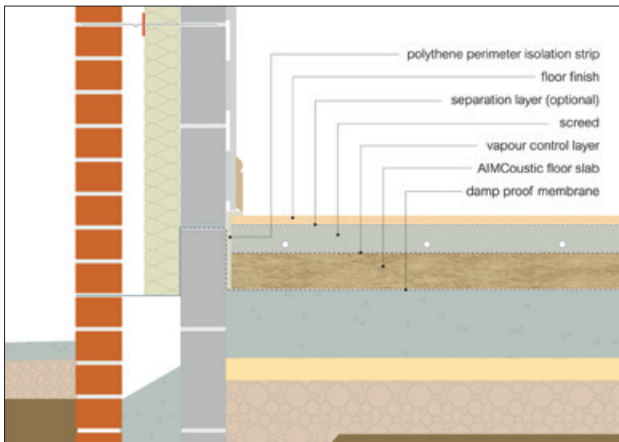
The density and fibre orientation of AIM AIMCoustic Floor Slabs means that they are especially effective at absorbing vibration, or impact, based sound. They are suitable for use in achieving Part E (Sound) of the Building Regulations in separating floors, floating floor solutions and many other such constructions.



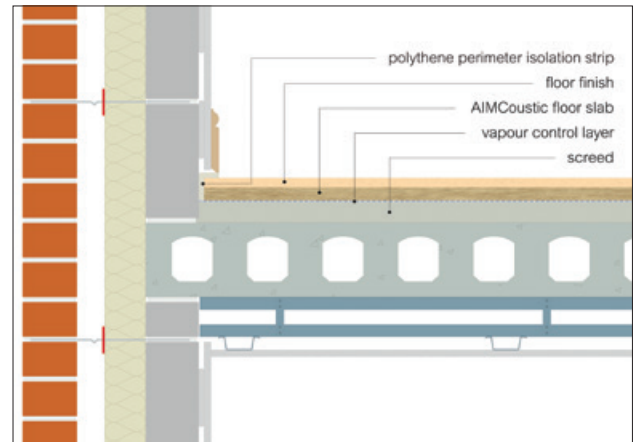
AIM are partners with NBS. Our products can be found on NBS Source and have been authored to NBS specification standards and have both CAWS and Uniclass 2015 classifications.

TYPICAL APPLICATION DETAILS

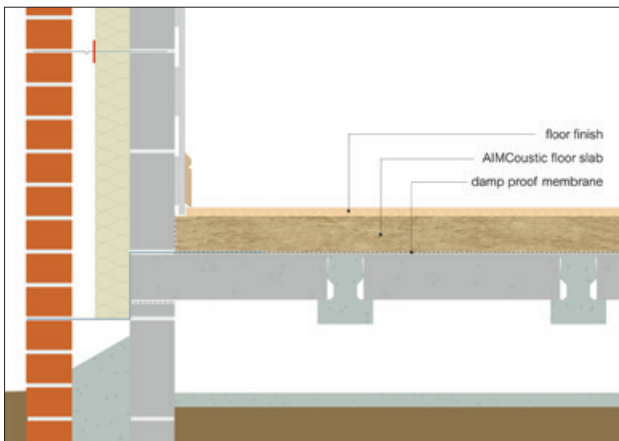
Ground bearing slab



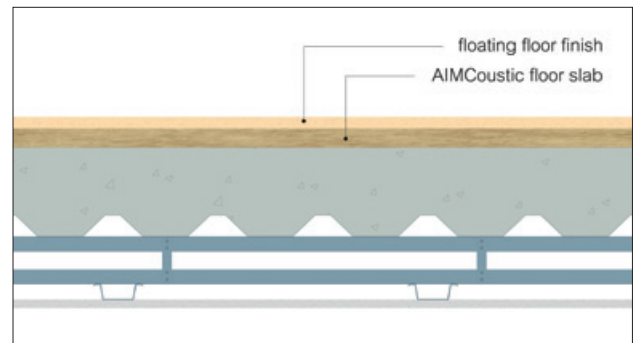
Insitu concrete separating floor Robust Detail E-FS-1



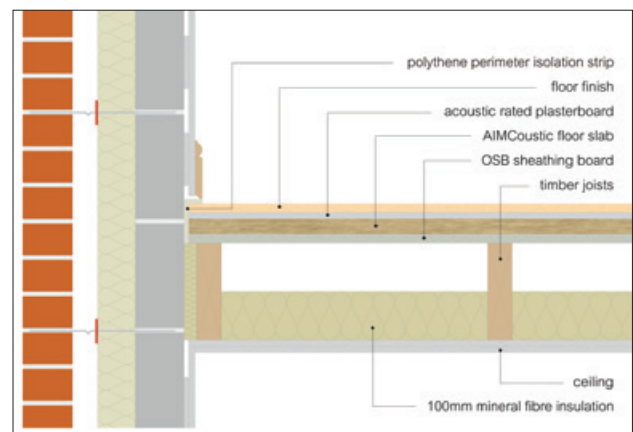
Beam and block floor



Insitu concrete separating floor Robust Detail E-FS-1



Timber floor



Items required for installation



PPE abrasion resistant gloves



PPE impact resistant goggles



RPE dust mask

INSTALLATION GUIDELINES

The sub floor must be structurally sound and level. AIMCoustic Floor Slab will accommodate minor imperfections of flatness and burrs of concrete but for more major unevenness, it will be necessary to lay a levelling screed, or sheathing ply over timber joists.

Damp Proof Membrane

A DPM is required under AIMCoustic Floor Slab when laid on ground floors or where the substrate hasn't fully dried.

Perimeter Strip

The perimeter of the floor should be lined with a polyethylene (PE) perimeter strip, to allow for acoustic isolation and expansion the surface layer. The depth of the PE perimeter strip is to be the thickness of AIMCoustic Floor Slab plus the thickness of surface layer (i.e. screed or chipboard).

Laying AIMCoustic Floor Slab

Boards should be laid lengthwise to the longest wall (having removed the rebated edge where the slab abuts the wall), with staggered joints, tissue face upwards.

Chipboard Surface Layer

Flooring Grade P5 T&G Chipboard should be laid with staggered joints, the long edges being parallel with the longest wall. All tongue and groove joints should be glued with PVA adhesive.

Temporary wedges should be used at the perimeter to hold the tongue and groove joints tight, whilst the adhesive sets. When the adhesive has set, the wedges must be removed and damage to the Isolation Strip made good.

At door thresholds, or where a change in floor construction occurs, a timber batten of the same thickness as the insulation should be inserted to reinforce the edge. Skirting boards should finish approximately 5mm above floor level and be isolated from the chipboard with PE perimeter strip.

Screeded Surface Layer

The screed should be of fine concrete and a minimum depth of 65mm (75mm for nondomestic applications). A light wire mesh is required in the screed. Joints in the AIMCoustic Floor Slab should be taped or rebated edge products used. Alternatively, a Vapour Control Layer could be introduced above the AIMCoustic Floor Slab. An upstand of PE perimeter strip is required at perimeters.

STORAGE

Products are supplied on wooden pallets with edge protection and a shower proof hood. Products should be stored away from the elements until ready for installation.

MAINTENANCE

This product does not contain moving parts and, if undisturbed, requires no routine inspections or maintenance.

DURABILITY

AIMCoustic Floor Slabs are chemically inert, will not sustain vermin and do not encourage the growth of rot, fungi, moulds or bacteria. They are compatible with all normal building materials. Rockwool stone wool has been proven in service for over 60 years, in a wide range of climates and degrees of exposure. It will generally perform effectively for the lifetime of the building, plant or structure.

HEALTH & SAFETY

Insulation products supplied by AIM are considered to be inert articles and as such are exempt from requirements to provide a Safety Data Sheet.

A Product Safety and Handling Information Sheet is available upon request.

ENVIRONMENT

Global warming potential = zero

For product recycling please contact: Rockwool
T: 01656 868400 E: recycling@rockwool.co.uk

ORDERING

To order this product the following information will be required:

- Thickness of slab
- Approximate quantity in m²
- Delivery location

Products are typically supplied in seven to ten working days but lead times may vary depending on existing factory commitments.

There is no minimum order quantity or value although small orders may attract transport surcharges.

TECHNICAL SUPPORT

Technical Support is available from our experienced sales team on 01293 582 400 or sales@aimlimited.co.uk

U Value calculations for AIMCoustic Floor Slab being used in a ground floor can be issued. In order to process such a request we need to know:

- The floor build up, including the ground condition.
- The exposed perimeter length (in m) and the floor area (in m²) – or the P/A ratio.
- The required U Value.

ABOUT AIM

AIM are a quality insulation convertor with over 30 years experience in the design, testing & manufacturing of high quality fire barriers for customers worldwide.

AIM working in partnership with



T 01293 582400
E sales@aimlimited.co.uk
W www.aimlimited.co.uk