

Fire Stop Blocks

Fire and smoke stop blocks for apertures in buildings,
especially the flutes of trapezoidal formwork.



Installation Guidelines

Issue 2 - 06 2024

PRODUCT

AIM Fire Stop Blocks are made from high density Rockwool stone wool. Incorporated into the building during construction, they are used to seal apertures and are permanently held in place by compression. They can also be used within metal cladding as a fire break and to protect the top flange of steel beams.

AIM Fire Stop Blocks are predominantly supplied as trapezoidal sections. Square cut, rectangular or round sections are also available.

PHYSICAL INFORMATION

- Minimum block length: 100mm
- Maximum length = 1200mm
- Minimum block height = 10mm
- Max block height = 225mm
- Widths to suit the profile
- Compression fit so no mastics or sealants required
- Tested to the principles of EN 1366-4 in composite metal decking
- Ozone depletion potential of zero, no CFCs or HCFCs used in manufacture
- Global warming potential = zero

STORAGE

Products are supplied in cartons and on wooden pallets with edge protection and a shower proof hood. Products should be stored away from the elements until ready for installation.

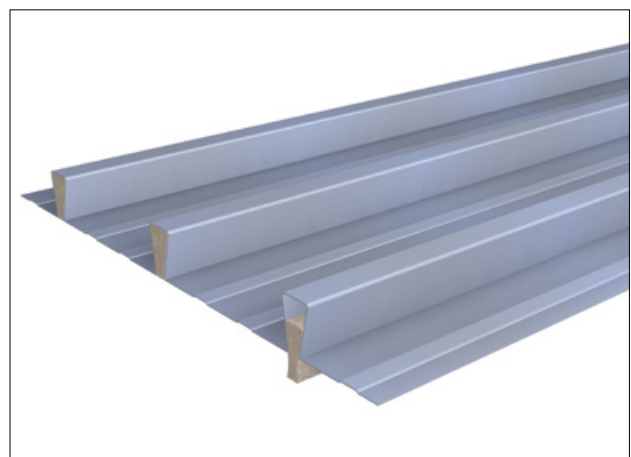
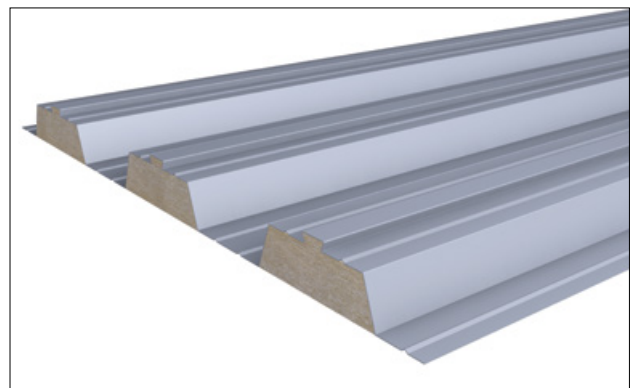
HEALTH & SAFETY

Insulation products supplied by AIM are considered to be inert articles and as such are exempt from requirements to provide a Safety Data Sheet.

A Product Safety and Handling Information Sheet is available upon request.

ITEMS REQUIRED FOR INSTALLATION

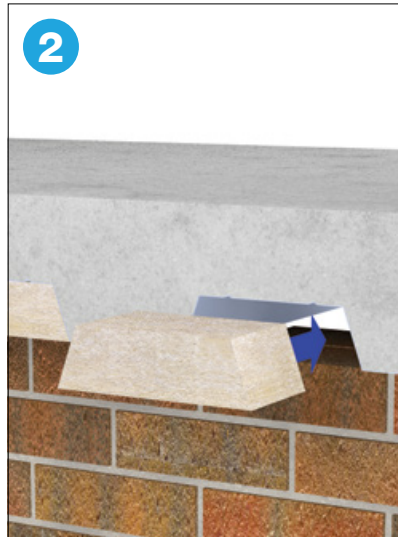
- PPE abrasion resistant gloves
- PPE impact resistant goggles
- RPE dust mask



INSTALLATION GUIDELINES



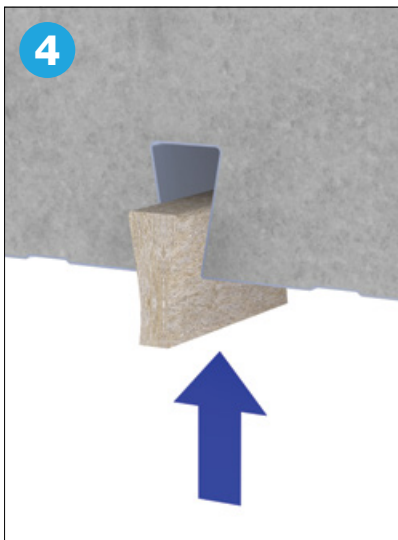
1 Measure the Fire Stop Block to check it is the correct profile. Check the length of the Fire Stop Block is the correct length to achieve the correct fire performance.



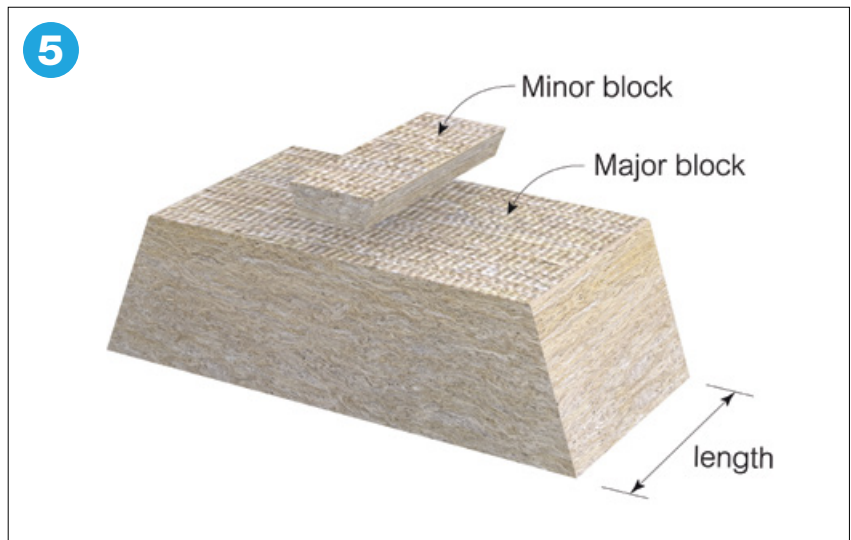
2 Fit the Fire Stop Block into the opening. It should fill the void completely. Any minor gaps or voids should be sealed with a fire rated intumescent mastic.



3 Holorib or dovetail blocks are supplied as square sections pinch fitted through the neck of the profile.



4 Once the Fire Stop Block is pushed through the neck of the profile it will expand to fill the void. Slide the Fire Stop Block into position over the firewall.



5 When fitting Major and Minor blocks, insert the minor profile first. A slip plate may assist in fitting the major block above rough surfaces.

MAINTENANCE

This product does not contain moving parts and, if undisturbed in the cavity, requires no routine inspections or maintenance.

It is recommended that the integrity of the barrier is rechecked if further works are carried out that may have involved disturbing the product.

VERSION CONTROL

Issue 2 - 06 2024

This document replaces and supersedes all previous versions.

The current version number can be verified at <https://www.aimlimited.co.uk/downloads/> or call AIM on 01293 582400